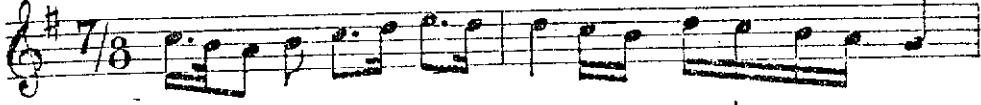


RAST

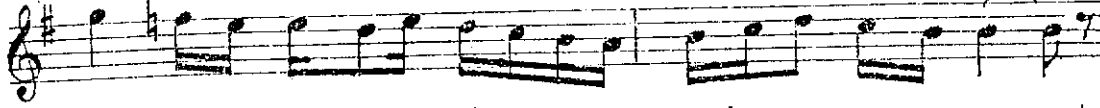
İLÂHÎ

Güfte ve bestesinin sahipleri malûm değildir

Devri hindi (♩=96) Ya — re su lâl lah şe fa at



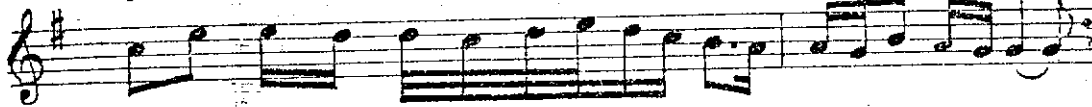
ey le a — l la — h a — ş kı na —



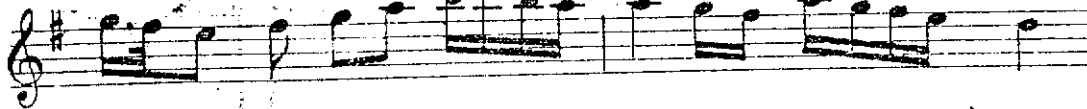
ben ga ri — bi — m sen i — na — yet



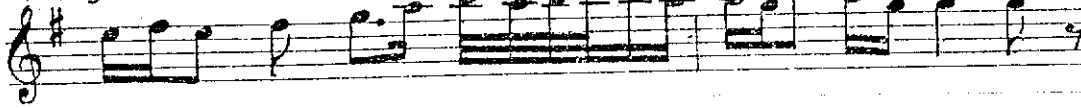
ey le a — l lah a — ş kı na



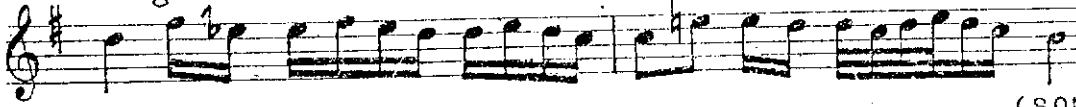
na — mü ra dı — m ber mü ra — d et



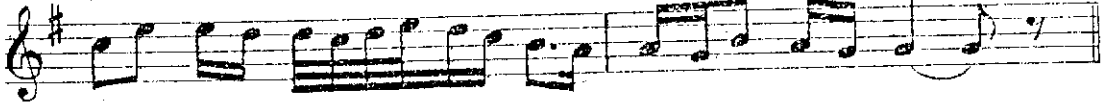
ya — re su la — l la — h me ded



ben ga ri — bi m sen i — na — yet



ey le a — l lah a — ş kı na (SON)



*Ya resulellah şefaât eyle allah aşkına
Ben garibim sen inayet eyle allah aşkına
Namûradım ber mûrad et ya resulallah meded
Ben garibim sen inayet eyle allah aşkına*